

Infant Mortality Alabama 2009

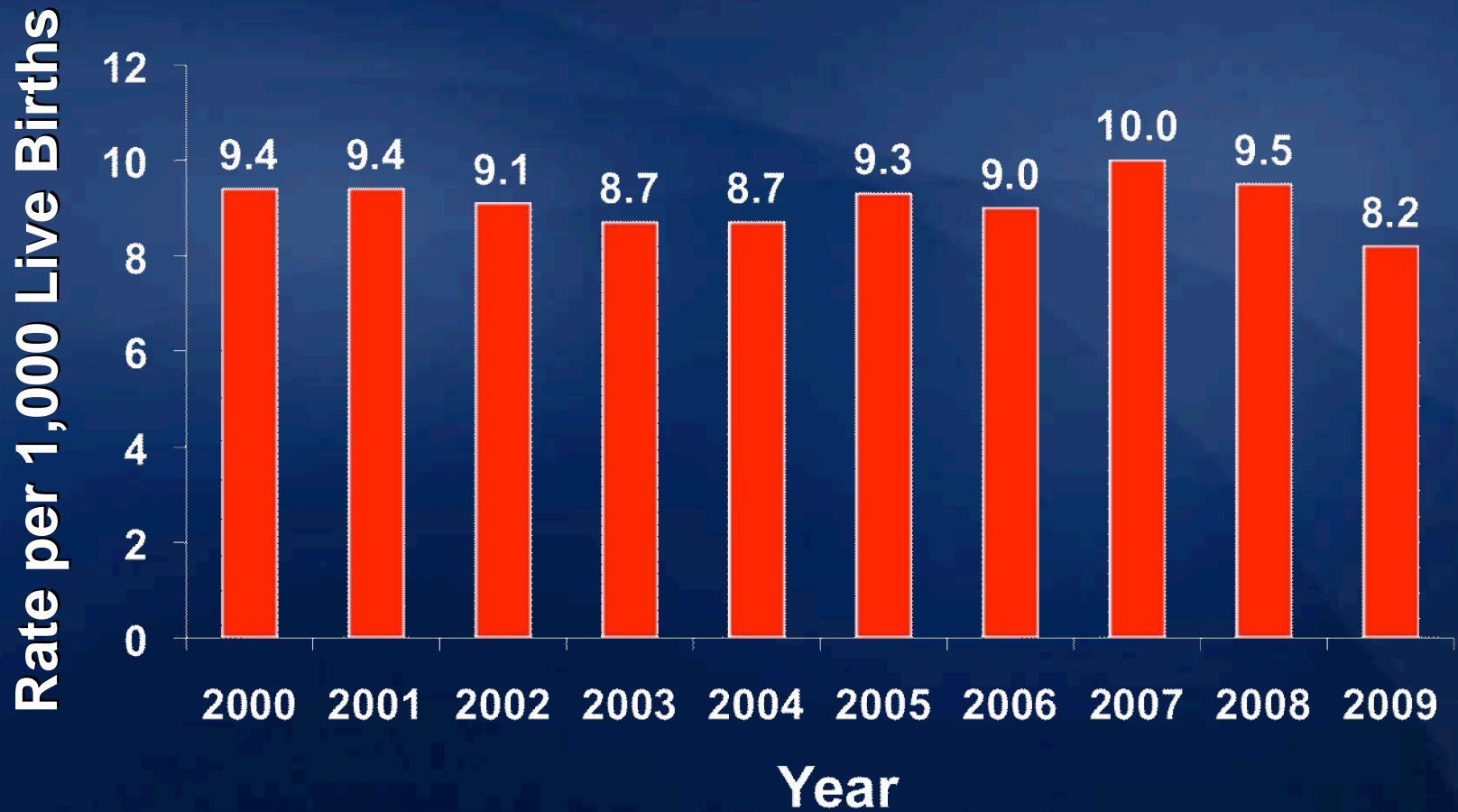
**Alabama Department of Public Health
Center for Health Statistics**

**TOTAL RESIDENT INFANT DEATHS AND INFANT MORTALITY RATES* BY COUNTY
ALABAMA, 2007, 2008, 2009 and 2007-2009 COMBINED**

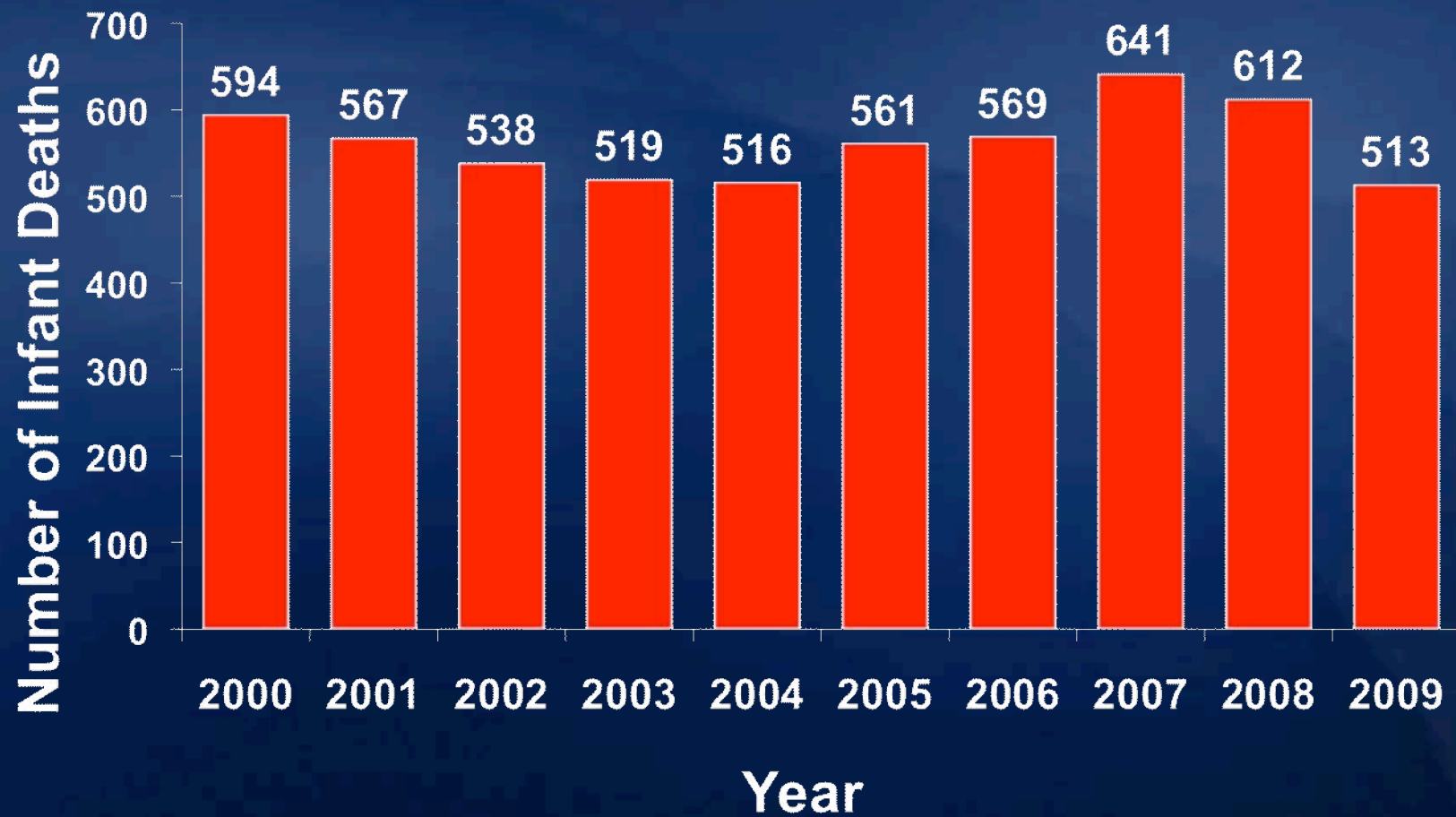
COUNTY	2007			2008			2009			2007-2009		
	NUMBER	RATE		NUMBER	RATE		NUMBER	RATE		COUNTY	NUMBER	RATE
TOTAL	641	10.0	612	9.5	513	8.2	TOTAL	1766	9.2			
AUTAUGA	6	8.3	9	11.7	2	2.9	AUTAUGA	17	7.8			
BALDWIN	11	4.8	16	7.0	19	8.9	BALDWIN	46	6.9			
BARBOUR	6	14.9	6	17.0	6	18.1	BARBOUR	18	16.6			
BIBB	3	10.8	2	7.4	3	13.0	BIBB	8	10.2			
BLOUNT	7	9.7	4	5.7	3	4.2	BLOUNT	14	6.6			
BULLOCK	2	10.5	0	0.0	0	0.0	BULLOCK	2	3.7			
BUTLER	4	13.7	4	13.5	1	4.0	BUTLER	9	10.7			
CALHOUN	11	7.0	13	8.5	17	11.1	CALHOUN	41	8.9			
CHAMBERS	5	12.1	3	7.2	3	7.5	CHAMBERS	11	8.9			
CHEROKEE	3	12.9	4	17.2	0	0.0	CHEROKEE	7	10.0			
CHILTON	5	8.2	8	13.1	8	13.5	CHILTON	21	11.6			
CHOCTAW	0	0.0	0	0.0	0	0.0	CHOCTAW	0	0.0			
CLARKE	3	9.6	2	6.3	1	3.3	CLARKE	6	6.5			
CLAY	2	13.5	2	12.2	0	0.0	CLAY	4	8.7			
CLEBURNE	0	0.0	1	5.1	5	27.5	CLEBURNE	6	10.8			
COFFEE	9	12.9	6	8.7	7	9.5	COFFEE	22	10.4			
COLBERT	8	12.2	4	6.2	7	11.1	COLBERT	19	9.8			
CONECUH	0	0.0	3	20.7	2	14.4	CONECUH	5	10.9			
COOSA	1	9.7	1	8.7	0	0.0	COOSA	2	6.5			
COVINGTON	7	16.1	5	11.3	2	4.0	COVINGTON	14	10.2			
CRENSHAW	3	17.4	0	0.0	1	5.8	CRENSHAW	4	7.8			
CULLMAN	11	9.8	11	10.8	1	1.0	CULLMAN	23	7.4			
DALE	7	8.9	3	3.9	10	12.6	DALE	20	8.5			
DALLAS	3	4.1	10	13.5	5	7.1	DALLAS	18	8.3			
DEKALB	6	5.7	4	3.9	7	7.5	DEKALB	17	5.6			
ELMORE	9	8.5	6	5.8	6	5.6	ELMORE	21	6.6			
ESCAMBIA	5	10.8	4	7.1	4	8.3	ESCAMBIA	13	8.6			
ETOWAH	13	10.4	19	15.0	10	7.8	ETOWAH	42	11.1			
FAYETTE	3	16.0	2	10.5	2	10.6	FAYETTE	7	12.3			
FRANKLIN	4	8.6	4	8.3	5	10.8	FRANKLIN	13	9.2			
GENEVA	6	17.9	2	6.0	2	7.4	GENEVA	10	10.6			
GREENE	0	0.0	0	0.0	0	0.0	GREENE	0	0.0			
HALE	1	4.4	3	13.9	0	0.0	HALE	4	6.2			
HENRY	0	0.0	2	11.0	0	0.0	HENRY	2	3.4			
HOUSTON	13	9.6	11	7.9	14	9.8	HOUSTON	38	9.1			
JACKSON	2	3.4	8	12.8	3	4.9	JACKSON	13	7.1			
JEFFERSON	121	12.5	126	13.2	81	8.7	JEFFERSON	328	11.5			
LAMAR	1	5.7	2	11.3	1	6.9	LAMAR	4	8.1			
LAUDERDALE	9	9.0	8	7.8	3	3.1	LAUDERDALE	20	6.7			
LAWRENCE	1	2.5	4	9.4	3	7.3	LAWRENCE	8	6.4			
LEE	13	8.4	10	6.7	10	5.9	LEE	33	7.0			
LIMESTONE	10	10.2	7	6.6	7	6.8	LIMESTONE	24	7.8			
LOWNDES	0	0.0	1	5.6	2	11.4	LOWNDES	3	5.7			
MACON	6	23.2	3	12.1	3	12.7	MACON	12	16.2			
MADISON	28	6.6	47	11.1	37	8.7	MADISON	112	8.8			
MARENGO	2	6.9	1	3.4	2	7.8	MARENGO	5	6.0			
MARION	6	15.7	2	6.1	3	9.7	MARION	11	10.8			
MARSHALL	14	9.4	8	5.3	11	7.3	MARSHALL	33	7.4			
MOBILE	65	10.4	43	6.9	44	7.3	MOBILE	152	8.2			
MONROE	0	0.0	2	6.9	1	3.7	MONROE	3	3.4			
MONTGOMERY	45	13.1	35	9.8	30	8.9	MONTGOMERY	110	10.6			
MORGAN	17	10.4	14	8.6	12	8.0	MORGAN	43	9.0			
PERRY	2	12.0	3	19.1	1	6.4	PERRY	6	12.5			
PICKENS	3	13.3	5	19.2	4	14.8	PICKENS	12	15.9			
PIKE	2	4.6	5	12.7	3	7.0	PIKE	10	8.0			
RANDOLPH	2	7.7	2	7.9	2	7.9	RANDOLPH	6	7.8			
RUSSELL	6	13.3	9	10.7	9	11.7	RUSSELL	24	11.7			
ST CLAIR	12	10.8	6	5.3	13	11.7	ST CLAIR	31	9.2			
SHELBY	17	6.3	11	4.2	11	4.4	SHELBY	39	5.0			
SUMTER	0	0.0	3	17.1	2	12.2	SUMTER	5	9.9			
TALLADEGA	21	19.2	15	14.4	11	11.2	TALLADEGA	47	15.0			
TALLAPOOSA	4	7.4	7	13.0	11	22.3	TALLAPOOSA	22	14.0			
TUSCALOOSA	41	16.2	32	12.3	28	11.3	TUSCALOOSA	101	13.3			
WALKER	8	9.3	13	15.1	7	8.5	WALKER	28	11.0			
WASHINGTON	1	5.1	2	10.9	1	5.9	WASHINGTON	4	7.3			
WILCOX	1	5.9	0	0.0	3	19.6	WILCOX	4	8.3			
WINSTON	4	14.1	4	14.1	1	4.6	WINSTON	9	11.5			

*Rate is per 1,000 live births.

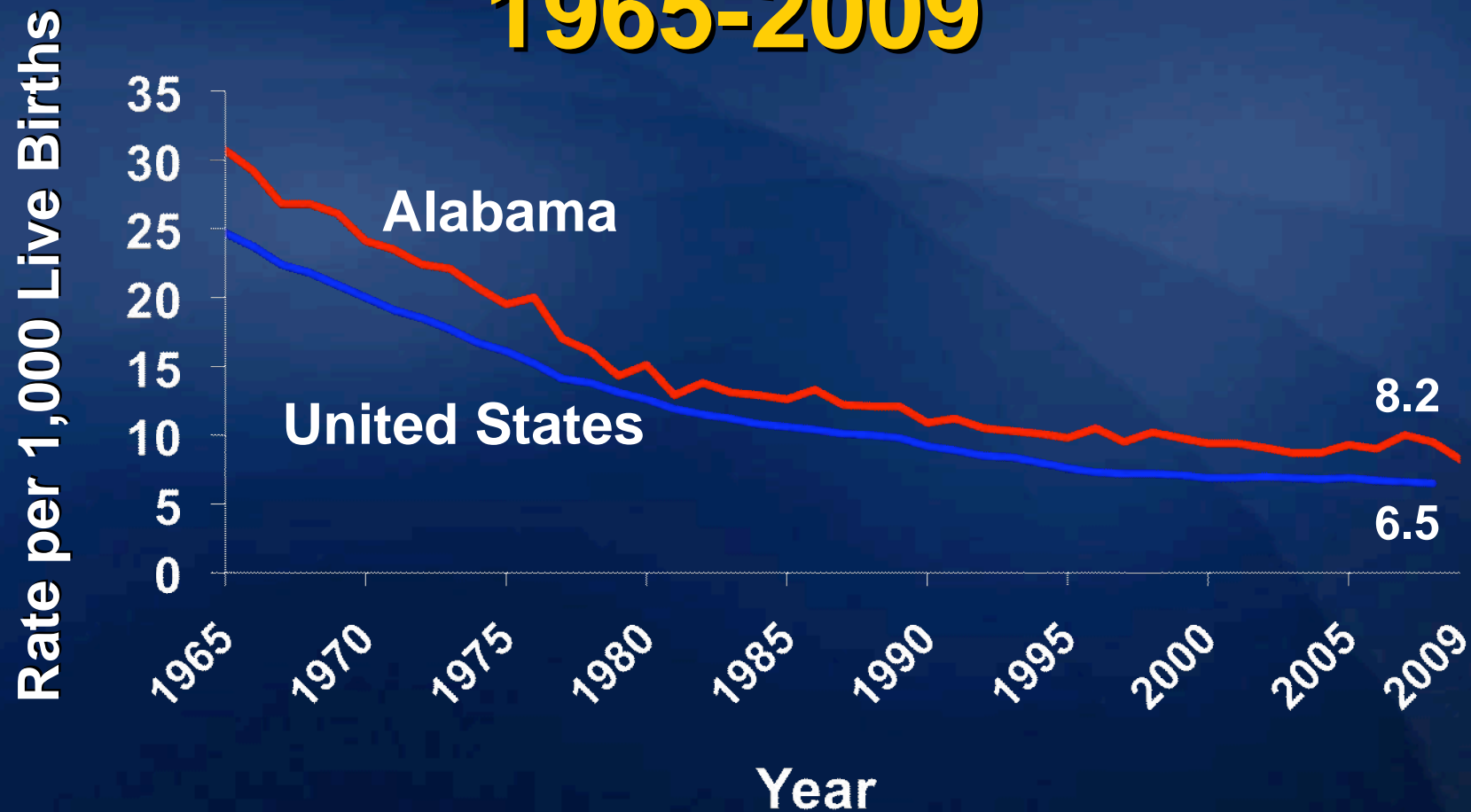
Infant Mortality Rates Alabama, 2000-2009



Number of Infant Deaths Alabama, 2000-2009

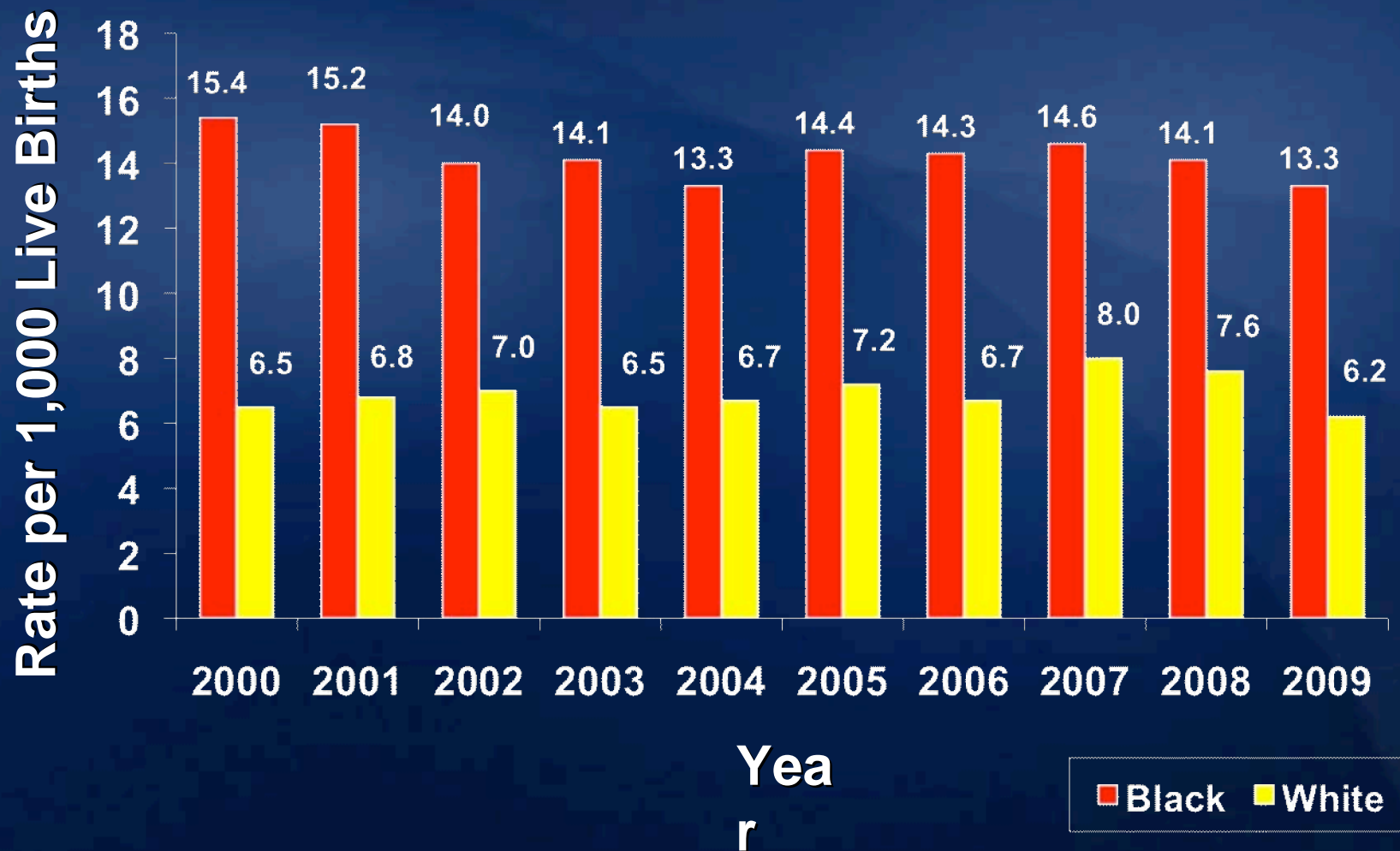


Infant Mortality Rates Alabama and United States¹ 1965-2009

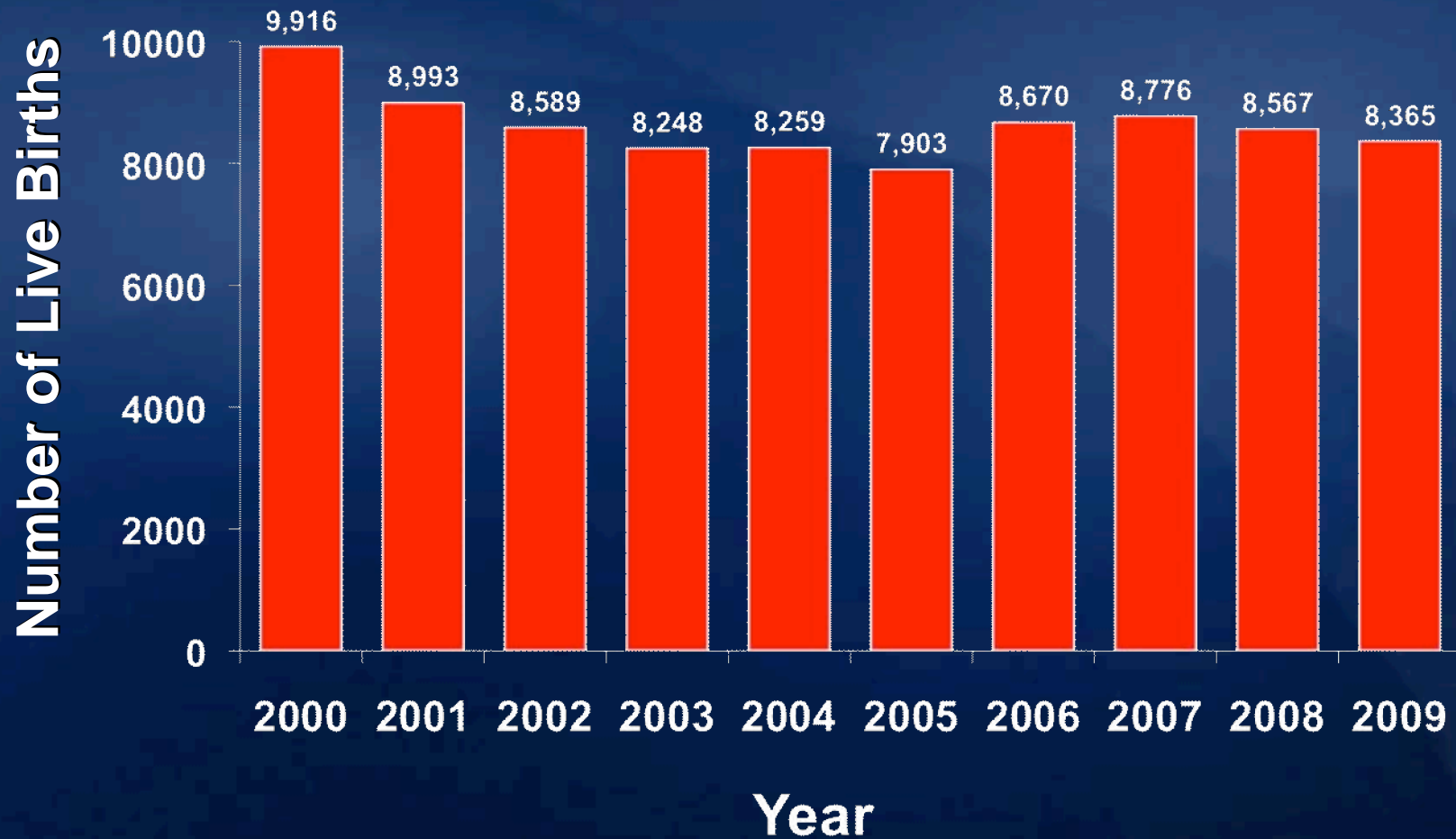


¹ 2007 US rate is provisional

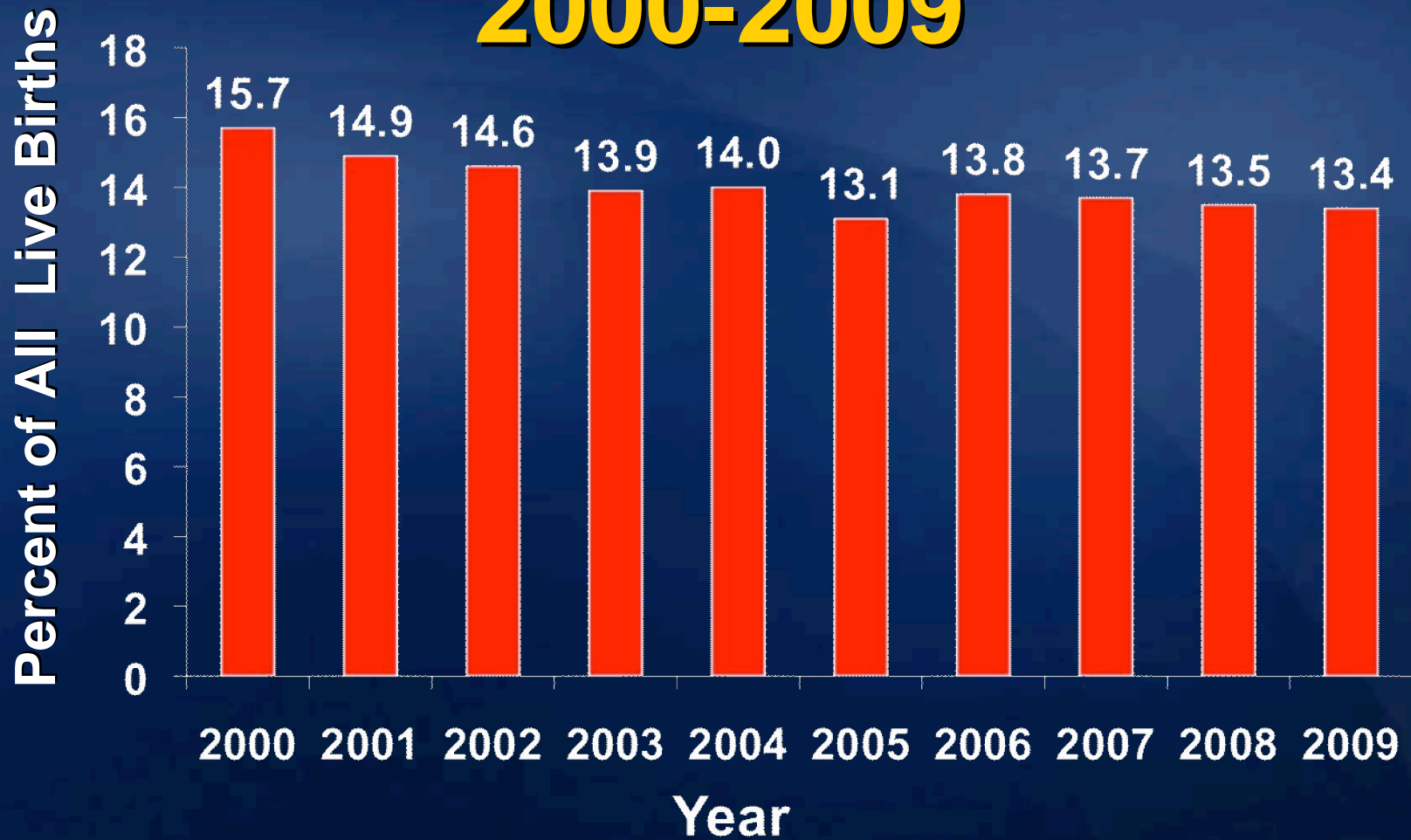
Infant Mortality Rates, by Race Alabama, 2000-2009



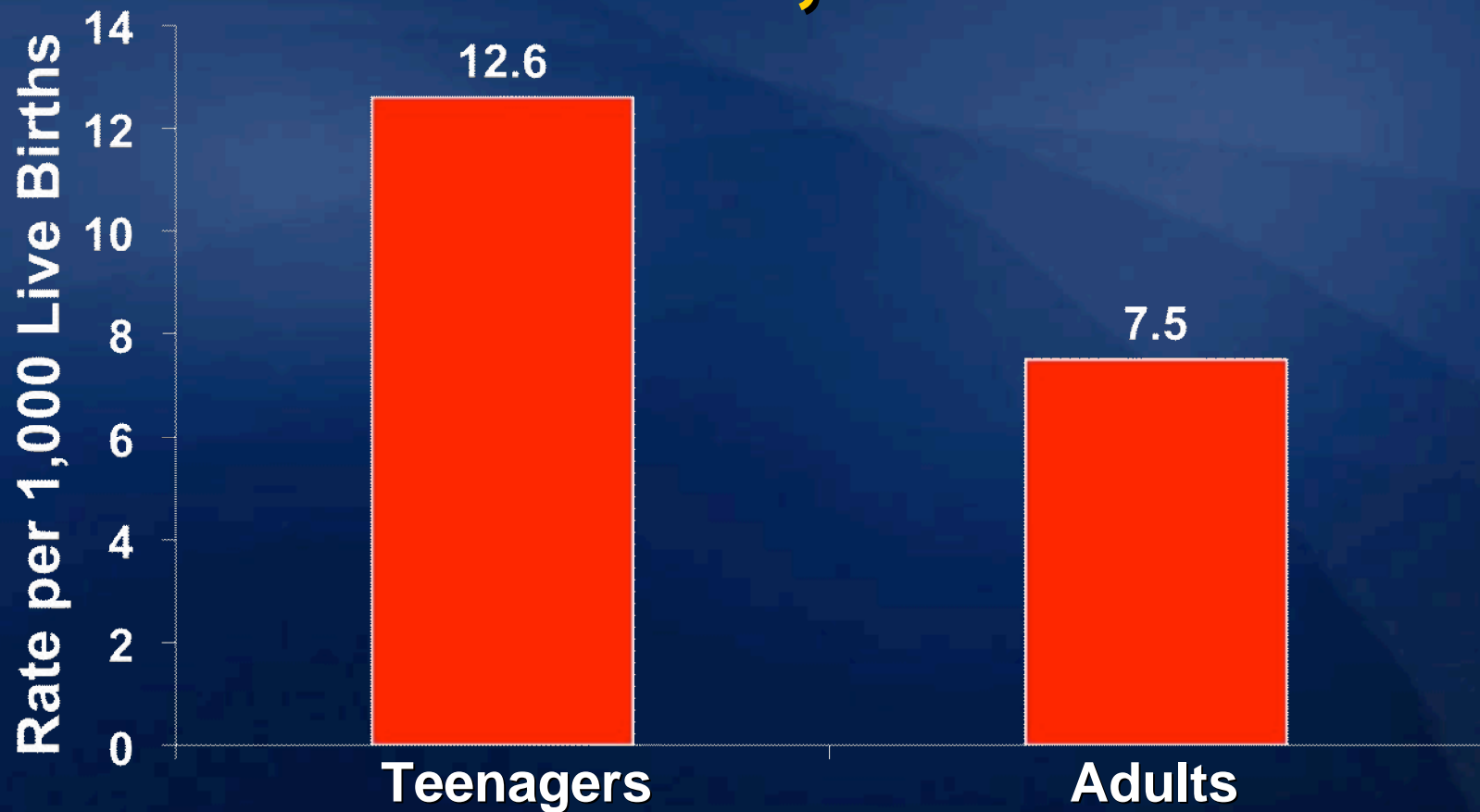
Number of Teen Births Alabama, 2000-2009



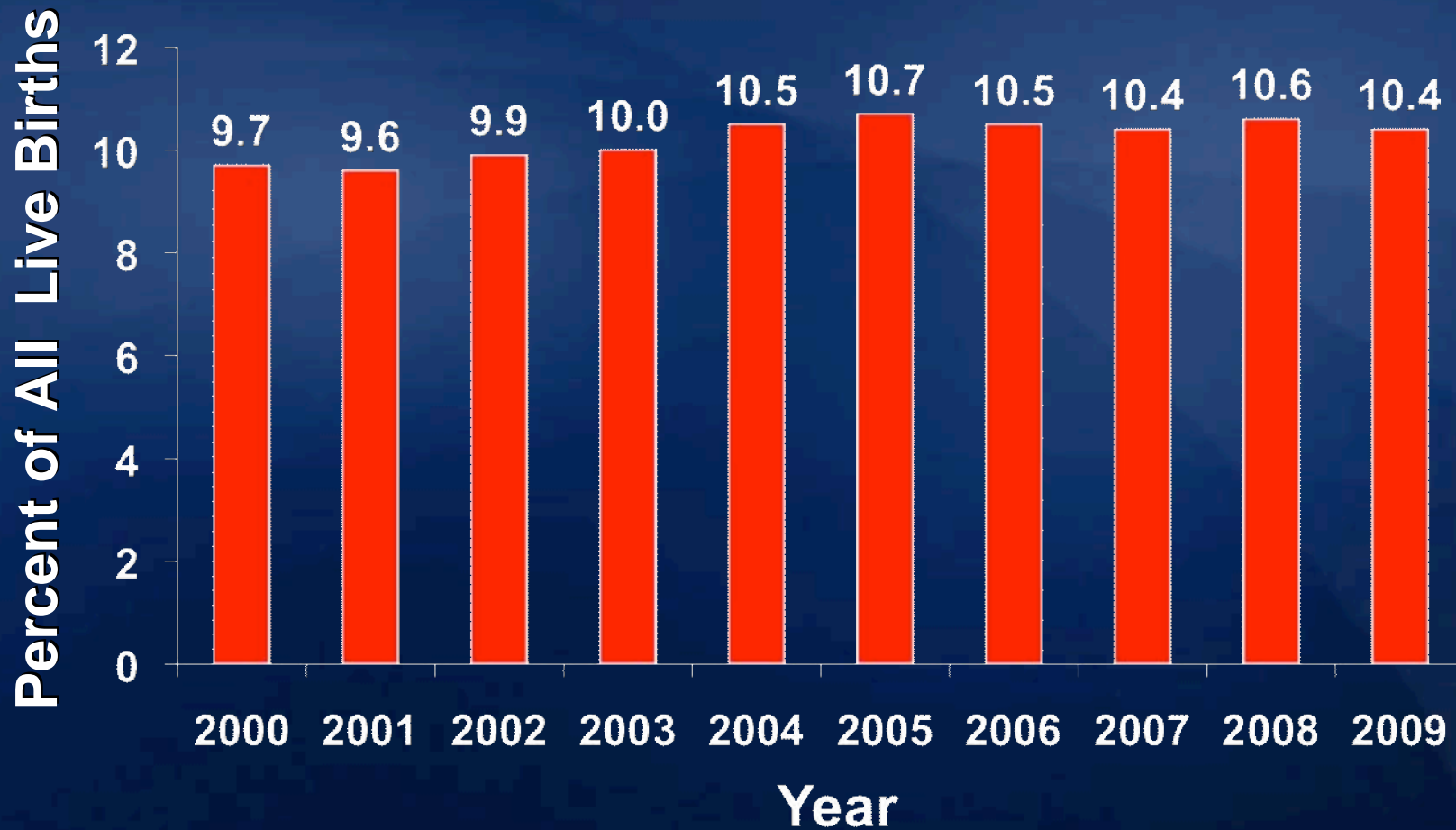
Percent of Births to Teenagers Alabama, 2000-2009



Infant Mortality Rates Teenagers vs Adults Alabama, 2009



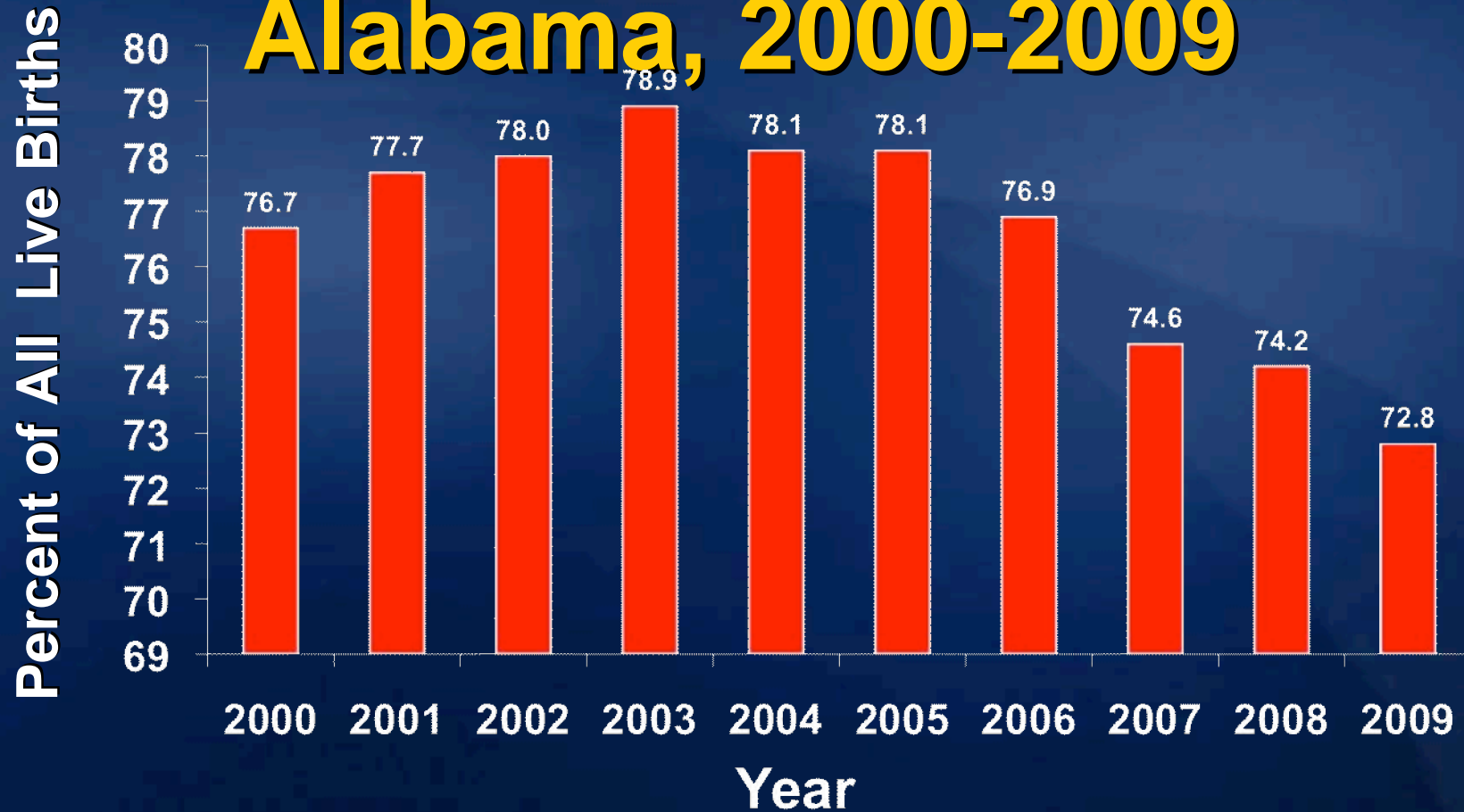
Percent of Low Weight Births Alabama, 2000-2009



Infant Mortality Rates Low vs. Normal Weight Births Alabama, 2000-2009

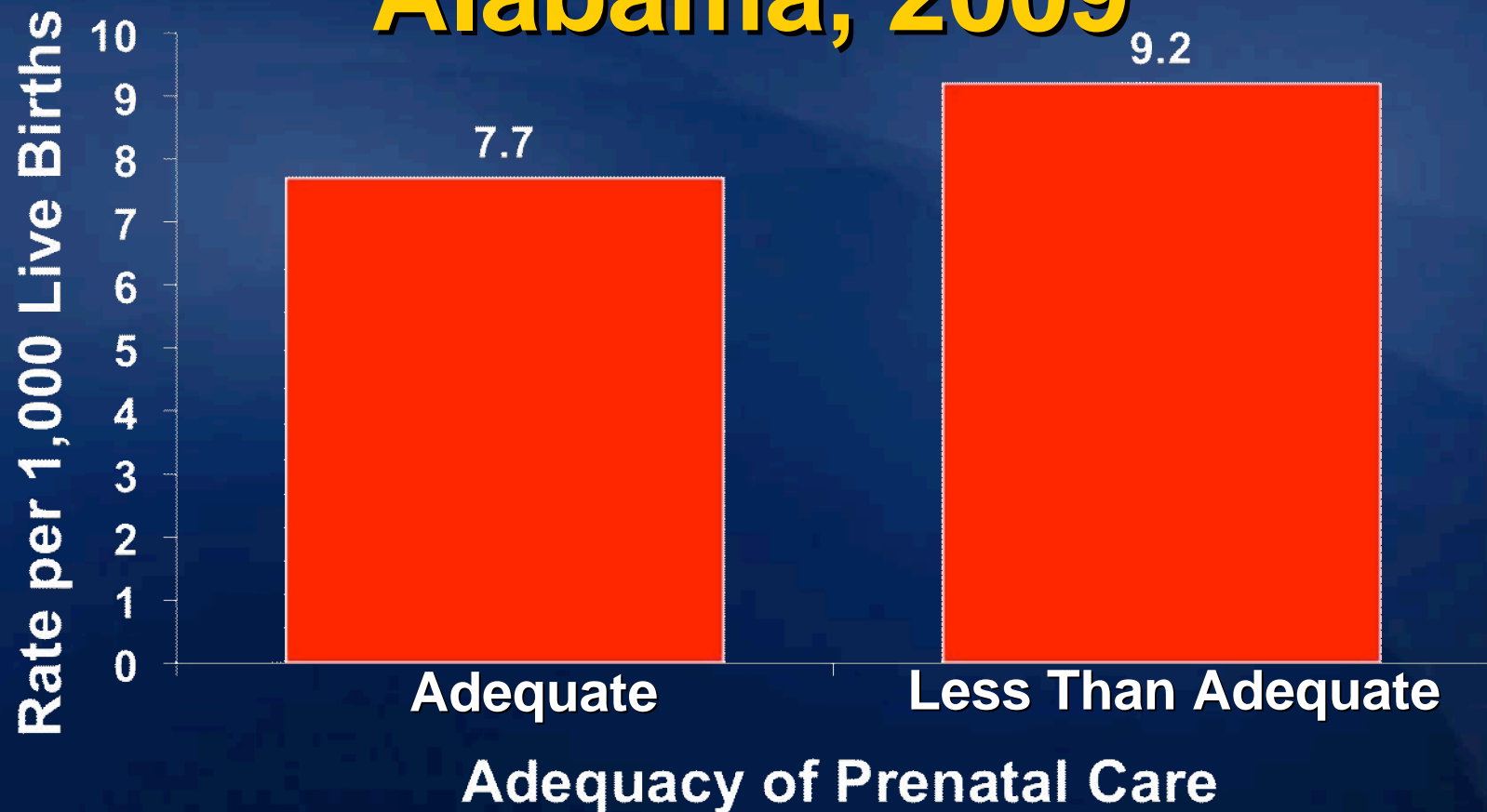


Percent of Births with Adequate Prenatal Care¹ Alabama, 2000-2009



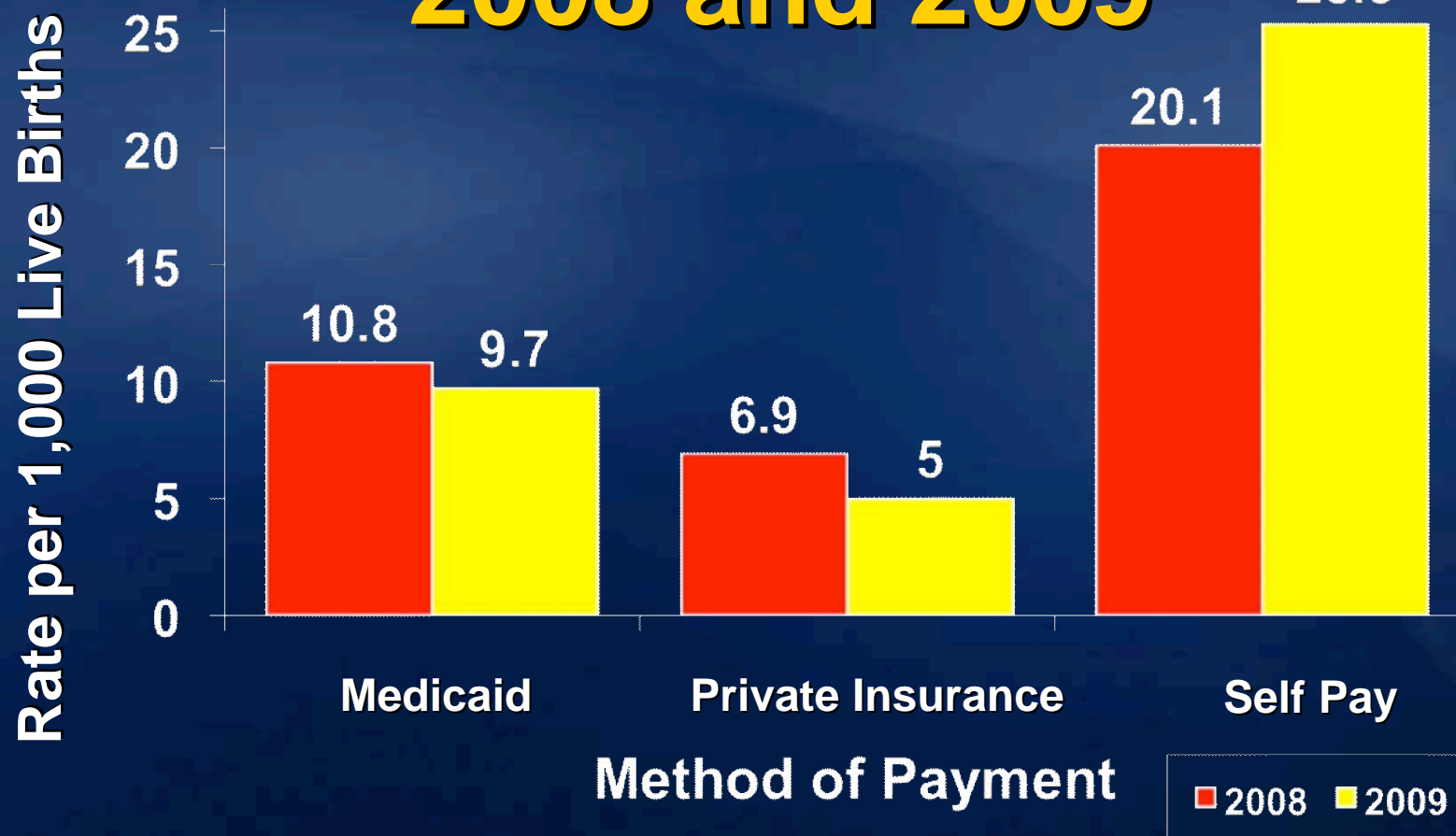
¹ Adequacy of care measured using the Kotelchuck index

Infant Mortality Rates by Adequacy of Prenatal Care¹ Alabama, 2009

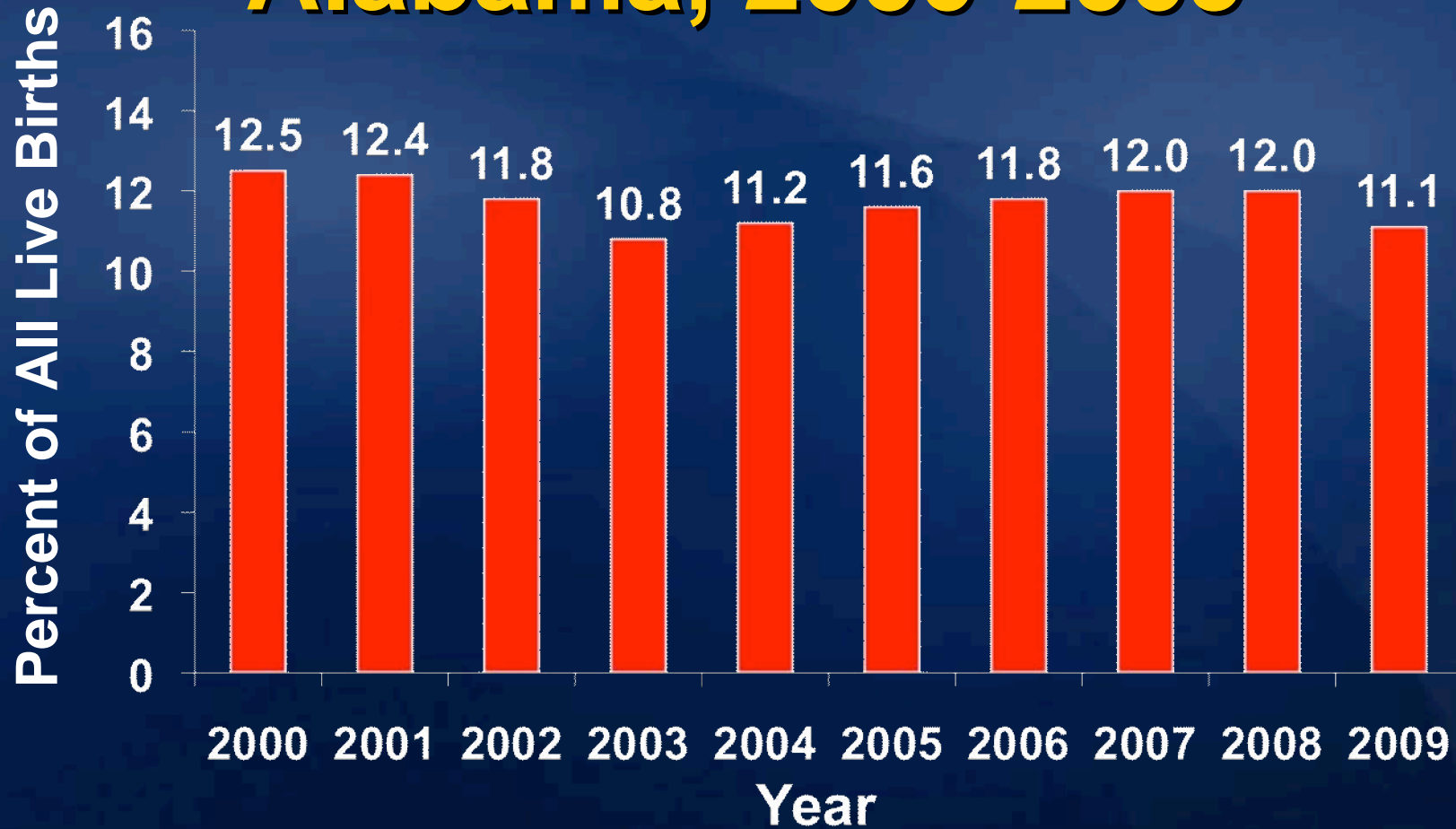


¹ Adequacy of care measured using the Kotelchuck index

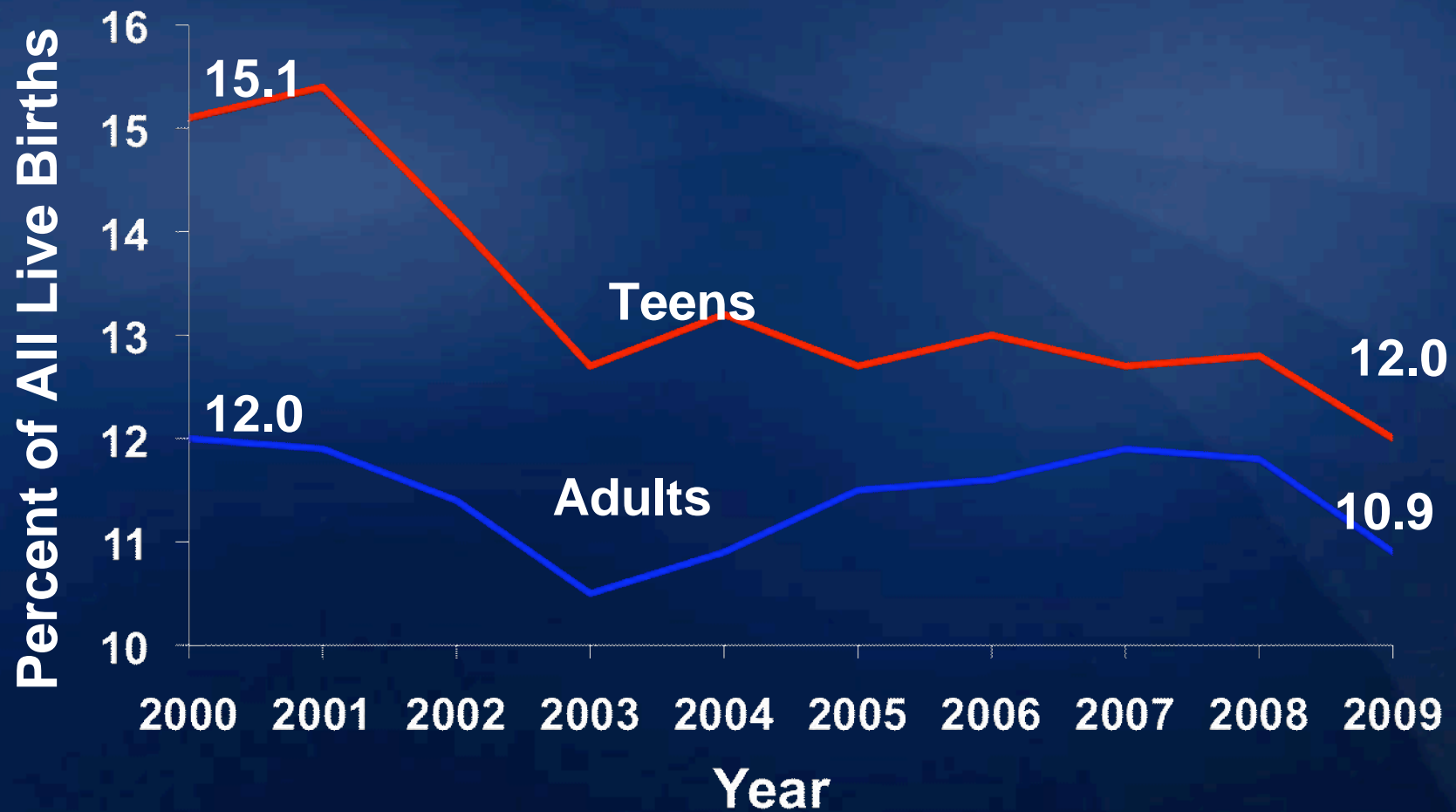
Infant Mortality Rate by Method of Payment, 2008 and 2009



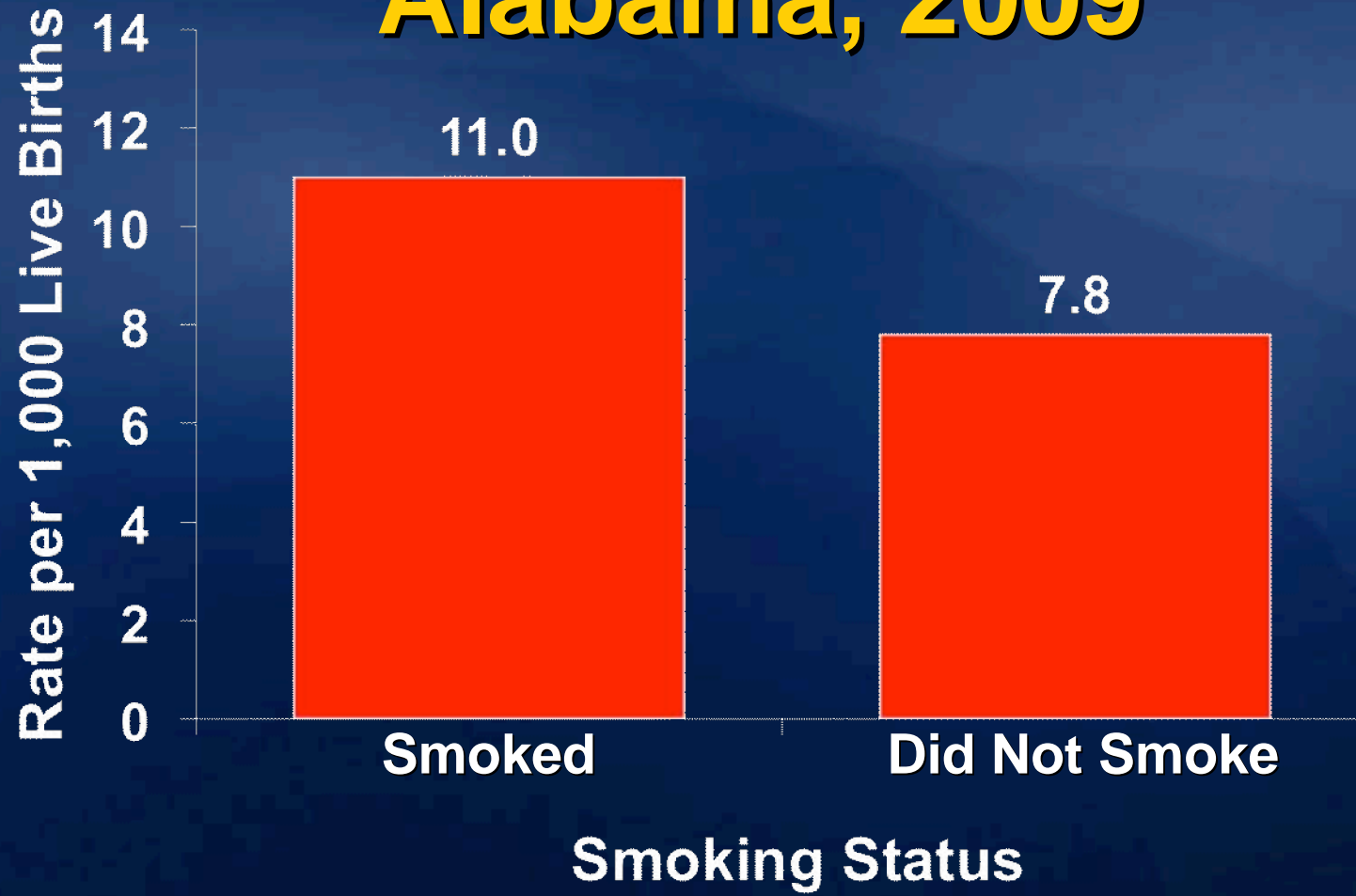
Percent of Births with Maternal Smoking Alabama, 2000-2009



Maternal Smoking by Age of Mother Alabama, 2000-2009



Infant Mortality Rates by Smoking Status Alabama, 2009



Summary

- **Lowest infant mortality rate in Alabama history**
- **Persistent racial disparity**
- **Decline in teen births**
- **Decline in adequate prenatal care**
- **Change in method of payment**
- **Decline in smoking**

Economic Hypothesis

Births by Method of Payment

	2008	2009	Change	Percent Change (%)
Total births	64345	62476	-1869	-2.9
Medicaid	31106	30980	-126	-0.4
Private Insurance	28718	27181	-1537	-5.4
Self pay	2634	2294	-340	-12.9
Other and Unknown	1887	2021	134	7.1

Births with No Prenatal Care Alabama 2000-2009

